



ACAPT  
NATIONAL CONSORTIUM OF  
CLINICAL EDUCATORS (NCCE)

STRIVING FOR EXCELLENCE



# WELCOME!

## NCCE BUSINESS MEETING

- > 2022 Education Leadership Conference
  - Saturday 10/29/2022 – 8:00am – 9:30am
- > Sign in –



# AGENDA

- > Introductions
- > PTPAC Trustee
- > Announcements/Updates
- > ACAPT reorganization
- > Transitioning clinical education into ACAPT's new structure
- > Honoring outgoing NCCE Board members
- > Installing new officers

# SPECIAL GUESTS ACAPT BOARD MEMBERS

John Buford, PT, PhD  
ACAPT BoD Liaison to NCCE

Peter Altenburger, PT, PhD  
ACAPT Vice President  
Sandy Brooks, Executive Director



# CURRENT NCCE BOARD MEMBERS

- > Janice Howman, PT, DPT, MEd
- > Matt Calendrillo, PT, DPT
- > Jamie Bayliss, PT, MPT, DHSc

## Academic DALs

- > Lisa Black, PT, DPT
- > Amy Both, PT, DPT, MHS
- > Chris Cesario, PT, DPT, MBA
- > Matt Garber, PT, DSC, FAAOMPT

- > Veronica Jackson, PT, DPT, WCC
  - Nominating Chair

## Clinical DALs

- > Tabitha Bonney Rozeboom, PT
- > Jaclyn Carson, PT, DPT
- > Suzie Maciel, PT
- > Kelly Meyers, PT, DPT, CSCS
- > Colette Pientok, PT, DPT, OCS

# PHYSICAL THERAPY POLITICAL ACTION COMMITTEE OF THE APTA (PTPAC)

Trustee: David Qualls



# ANNOUNCEMENTS

- > Common Terminology online glossary
- > NCCE membership update
- > Pre-Admissions Observation Hours post TF work
- > Resource sharing webinars
- > Regional consortia networking
  - Annual ELC networking sessions
  - Roadshow pilot
- > CE Placement Capacity and Process Innovation TF
- > Data collection/sharing opportunities
  - Centennial Scholar final report
  - ACAPT resources (Center for Excellence, IPS)
  - ACAPT partnership with EXXAT

# CLINICAL EDUCATION COMMON TERMINOLOGY ONLINE GLOSSARY

Web site:

[PTclinedterms.org](http://PTclinedterms.org)

Email:

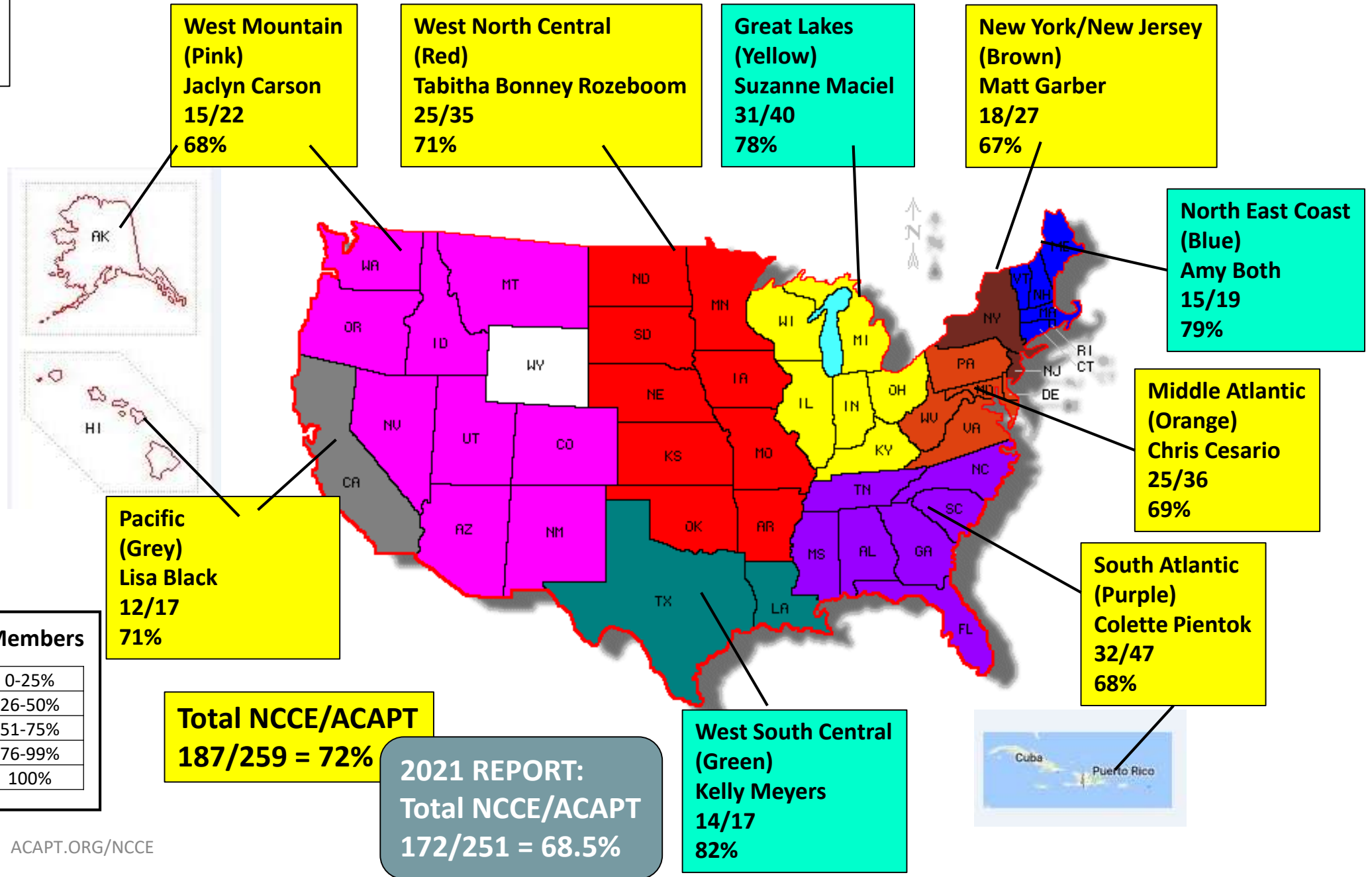
[info@ptptaclinedterminology.org](mailto:info@ptptaclinedterminology.org)

- > Congrats to our joint NCCE-CE SIG-PTAE SIG workgroup!!
  - Co-Chairs: Mia Erickson, PT, Ed.D and Kim Snyder, PTA, MEd
  - ACAPT Panel: Melissa Booth, Marisa Birkmeier, Vicki LaFay
  - PTAE SIG: Peggy Newman, Lisa Stejskal, Jennifer McDonald



# NCCE Region Map as of 10.15.22

**Note:**  
White States  
No DPT Program



# PRE-ADMISSIONS OBSERVATION HOURS POST TF UPDATE

## Recommendation from the original Pre-admissions Observation Hours Task Force:

Propose recommendations of alternative experiences outside of traditional ObHr, that academic programs can consider, that may demonstrate a prospective student has explored and understands the physical therapy profession.

## ELP Pre-admissions Observation Hours Task Force:

Guiding principles, recommendations for alternative experiences, and a project management timeline proposed

## Current work:

Dissemination of a survey that will assist with the development of such learning modules for prospective DPT and PTA applicants **and** determine academic programs' willingness to accept alternative experiences in lieu of observation hours

# RESOURCE SHARING WEBINAR SERIES

- [ACAPT Clinical Education Resource Repository](#)
- [ACAPT Recorded Events](#)
- [ACAPT YouTube Channel](#)

Date		Member Institution	Live attendance	Recording views
April 2021	Facilitating clinical reasoning via alternative teaching in clinical education	University of Montana	210	409
July 2021	Acute care simulation to prepare for clinical education experiences	University of Kentucky	158	627
Sept 2021	Reflective activities in student learners	Springfield College	168	278
March 2022	Addressing interprofessional practice in clinical education	University of North Texas Health Science Center at Fort Worth	NA	246
May 2022	Fostering student professional behaviors and skills by implementing an early part-time ICE	University of the Pacific	180	151
July 2022	Panel discussion: How did you get into clinical education	Multiple academic and clinical members	NA	196
Sept 2022	Intentional infusion of the master adaptive framework in residency and clinical ed	University of Missouri	NA	135

# 2023 WEBINAR SERIES

Call for presenters!!



[ncce@acapt.org](mailto:ncce@acapt.org) to get  
the conversation going!

PLANNED FOR 2023

> Department of VA Clinical Education

Managing Burn-out through Resilience  
Training “Heal out Loud”

> University of Colorado Partnership

“How to” for Developing CI Education  
Resources in your CE Program

# ANNUAL ELC REGIONAL NETWORKING SESSIONS

YEAR	TOPIC	OUTCOME
2016	Getting to know regional consortia (structure, functions, outcomes)	Collaborations in Clinical Education: Coordinating Top-Down and Bottom-Up Efforts to Advance Best Practices in Physical Therapist Education. <i>Journal of Allied Health</i> . 2018 Fall:47(3):e67-e74
2017	Envisioning Enhanced Academic-Clinical Partnerships	General discussions and networking about A-C partnership, capacity and variation
2018	Cruising the Communication Waterways of Clinical Education	Perspective in physical therapy education: creating a communication network to connect clinical education stakeholders. <i>The Journal of Clinical Education in Physical Therapy</i> . 2020; 2. <a href="https://doi.org/10.7916/jcept.v2.1962">https://doi.org/10.7916/jcept.v2.1962</a>
2019	Brainstormed strategies for building national CE network structure	Foundational to ACAPT Centennial Scholar project (baseline CE database investigation)
2020	Exploring Development of a CE Resource Hub	Foundational to launching resource sharing webinars
2021	Networking for Excellence Across the Learning Continuum	Connected clinical educators with similar interests and innovative ideas for learning across the continuum
2022	Networking Around Data-Driven Decision-Making in Clin Ed	TBD

# 2022 NETWORKING SESSION

## *NETWORKING AROUND DATA-DRIVEN DECISION-MAKING IN CLINICAL EDUCATION*

### TOPICS DISCUSSED:

- > Medical center affiliations: What role do they play in clinical education?
- > Academic-clinical engagement: How can we do better?
- > Clinic site visits: Do the logistics matter?
- > Used available data to stimulate roundtable discussions
  - ACAPT Institutional Profile
  - CAPTE Aggregate Report
- > Shared current data collection/usage practices
- > Brainstormed data needed to enhance our daily operations and assist in our pursuit of excellence

# NCCE ROADSHOW PILOT



- > Host: New England Consortium of Clinical Educators
- > Date: Thursday, November 17, 2022
- > Locations: Franklin Pierce University and University of Rhode Island
- > Session objectives:
  - Enhance communication across local, regional and national CE stakeholders
  - Identify and share consortia best practices
  - Empower clinicians as equal partners in academic physical therapy
  - Connect regional clinical partners to national resources and engagement opportunities
- > Goal: next 2-3 roadshows in 2023!!

# Task Force on Clinical Education Placement Capacity and Process Innovation-Update

Jamie L. Greco PT, DPT Ed.D  
Task Force Chair



# Purposes of the task force

*To gather data  
regarding current and  
projected future clinical  
education (CE) capacity  
(supply and demand)*

*To determine if capacity  
issues are affecting the  
current placement  
process*

*To explore options for  
transforming the  
current placement  
process*

# Task Force Members

Position on Task Force	Name	Name of institution/clinical site	Job Title	Primary role in PT clinical education
Task Force Chair	Jamie Greco PT, DPT Ed.D	Duke University	Assistant Professor, CE Team Member	Member of academic program CE team
PLACEMENT PROCESS SUBGROUP				
Subgroup lead	Janet Jackson- Coty	University of Pittsburgh	Associate Professor and DCE (Hybrid)	DCE
Member	Valerie Teglia PT, DPT	University of Southern California	DCE/Assistant Professor of Clinical Physical Therapy	DCE
Member	Anjanette Nunez PT, DPT	Emory University	DCE, Assistant Professor	DCE
Member	Barbara Wasilk MA, CCC/SLP-L	Northwestern Medicine	Rehabilitation Services Manager	SCCE
Member	Peter Haywiser	Allegheny General Hospital	Senior Physical Therapist	SCCE
Member, NCCE board liaison	Colette Pientok PT DPT OCS	Memorial Hermann Sports Medicine and Rehabilitation	Manager of Education / SCCE	SCCE
CAPACITY SUBGROUP				
Subgroup lead	Janet Konecne PT DPT Ph.D OCS	Western University of Health Sciences	DCE	DCE
Member	Jessica L Maxwell PT, DPT, Ph.D	Northeastern University	Assistant Dean, Clinical and Experiential Learning/DCE/Assoc Clinical Professor	DCE
Member	Thuha Hoang PT, Ph.D	LSUHSC-New Orleans	Director of Clinical Education	DCE
Member	Tiffany Marulli PT, DPT, Ph.D, OCS	The Ohio State University Wexner Medical Center	Team Lead for Clin Ed/Physical Therapist	Member of academic program CE team
Member	Mari Knettle PT, DPT Ed.D	Cleveland Clinic	Director, Center for Health Sciences Education	Clinic Site Administrator
Member NCCE board liaison	Tabitha Bonney Rozeboom MPT	San Diego State University/Sharp Memorial Hospital	PT III/SCCE	SCCE
Subgroup/TF Consultant	Michael Brents PT DPT MHA	CommonSpirit Health at Home	VP, Business Intelligence	Clinical Analytics

# Task Force Objectives

## Placement Process Subgroup

- Provide a systematic review of the placement processes used in other health professions focusing on the benefits and challenges related to capacity, placement rates, efficiency and academic-clinical partnership relations.

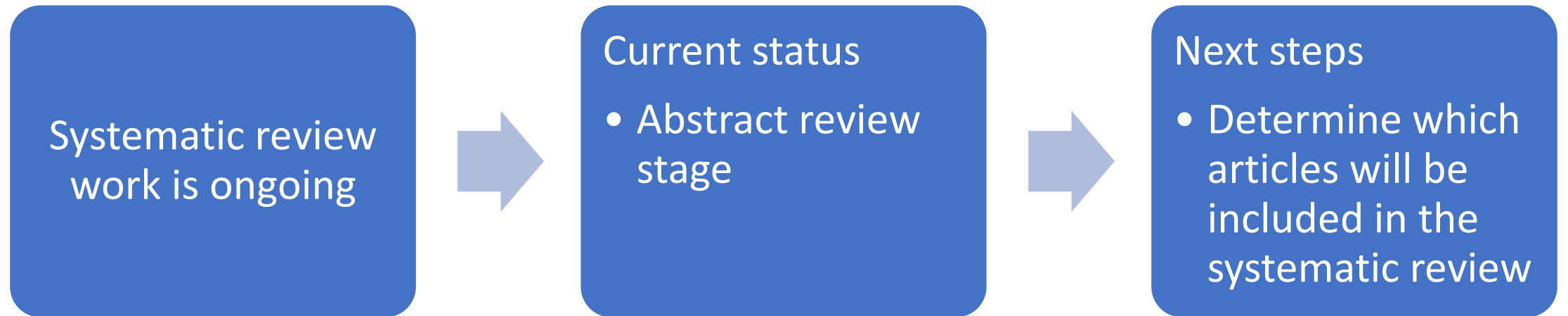
## Capacity Subgroup

- Determine the demographics of existing and potential clinic sites
- Recommend definitions for the term capacity and its related concepts (i.e. supply, demand, surplus, distribution, etc.).
- Determine supply and demand trends for CE experiences (actual or perceived, current and projected).
- Estimate the impact of capacity on the future of the placement process.

## Both Subgroups

- Provide recommendations for ensuring sustainability of CE capacity for the future of the profession
- Suggest opportunities for transforming the current placement process to enhance efficiency and capacity while building upon existing individual and regional partnerships.

# Progress to date- Placement Process Subgroup



# Progress to date- Capacity Subgroup

Created survey → target audience SCCEs



## Current status

- Finalized draft survey
- IRB submission in progress



## Next steps

- Survey pilot prior to wider distribution
- Finalize survey based on pilot feedback and distribute

Be on the lookout for  
the survey- please  
consider participating!

Thank you for your support 

# CE DATA MANAGEMENT

## *Centennial Scholar Final Report*

- > Review of Use of Clinical Education Data Management Systems by Academic Physical Therapy Programs
  - Recommendations:
    - Pause discussions re: national centralized CE data management system
    - Explore opportunities for data mining w/in current systems
    - Identify sustainable, standardized methods to capture, store & analyze data
    - Identify most relevant data needed to inform academic physical therapy
    - Actively promote a culture of shared data
    - Investigate impact of CE data management platforms on all CE stakeholders

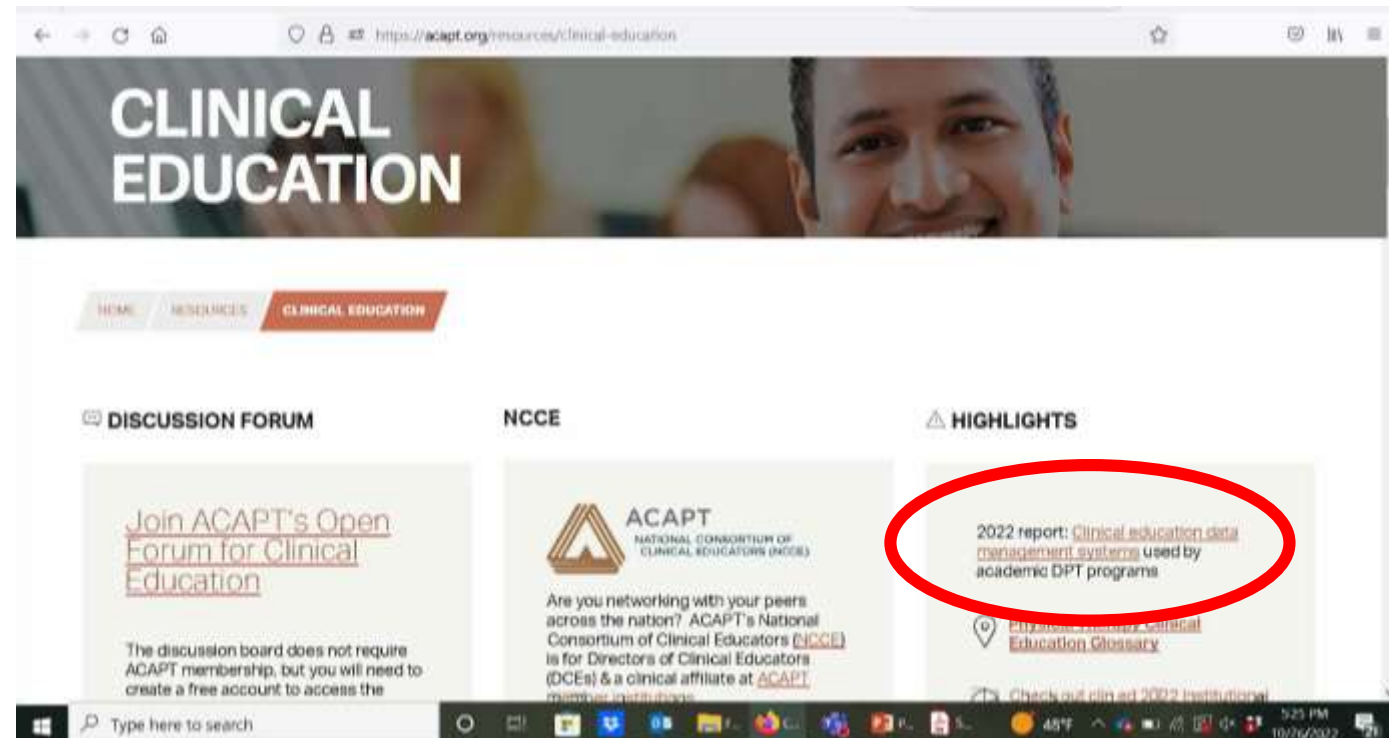


Erin Green, PT, DPT,  
FAAOMPT, OCS

# CE DATA MANAGEMENT

## *Centennial Scholar Final Report*

> Available at <https://acapt.org/resources/clinical-education>





# DATA COLLECTION/SHARING ACAPT RESOURCES

## > Center of Excellence

- Supports assessment through data management and analysis
- Foundation:
  - ACAPT's Criteria for Excellence
  - ACAPT's Excellence Framework for Academic Physical Therapy

## > Data Advisory Committee

<https://acapt.org/excellence>

## > Institutional Profile Survey (IPS)

- Goal: capture important baseline data about DPT programs
- Inaugural survey Jan 2022
  - Sent to ACAPT reps (79% response rate)
  - Login to your member portal to access results report



# COMING SOON:

## *ACAPT 2023 INSTITUTIONAL PROFILE SURVEY*

### > New in 2023:

- Secure member accounts for each program to complete survey
- Programs will be able to run unique, anonymized reports relevant to their needs (after data collected, verified and integrated)

### > Timeline:

- December – PDF of survey sent out for preview of questions so can start gathering data
- January 4, 2023 – survey sent out to ACAPT member program directors
  - **Work with your Program Director to report your clinical education data!**
- February 3, 2023 – deadline for completing survey



AMERICAN COUNCIL OF  
ACADEMIC PHYSICAL THERAPY



- > ACAPT – Exxat partnership to facilitate data sharing
  - **Only anonymized data will be shared**
  - Process for getting program approval for sharing data will be established
  - Data will automatically be shared through an application programming interface
  
- > Examples of partnership
  - Build a global directory of clinical education sites/SCCEs maintained by Exxat that can be used to send blast communications, survey links, etc.
  - Collaborate to identify commonly collected data, explore ways to streamline data collecting/reporting for the Institutional Profile Survey, etc.

# A NEW VISION FOR ACAPT'S ORGANIZATIONAL STRUCTURE



AMERICAN COUNCIL OF  
ACADEMIC PHYSICAL THERAPY



ACAPT

ACAPT.ORG

# KEEP IN MIND...

- > **ACADEMIC PHYSICAL THERAPY** includes didactic and clinical education therefore is inclusive of academic programs and clinical education sites
- > **INSTITUTIONS** = academic programs and clinical education sites
- > **INSTITUTES** = the new organizational unit within ACAPT (replacing the current consortia structure)
- > **CONSORTIUM/CONSORTIA** = ACAPT's nine consortia (ie: NCCE, NIPEC, SIPTEC, CHEP, etc.) NOT our regional clinical education consortia

# PURSuing EXCELLENCE: AN EVOLUTION

**The vision: Institutions can be champions of innovation, inclusion and inquiry**

2014

*ACAPT created with the purpose of leading physical therapy in the pursuit of academic excellence*

**But what is excellence?**

2019

*Excellence defined*



**And what makes a PT program excellent?**

2021

*Program criteria defined*



**How can ACAPT organize itself to drive excellence?**

2023

*ACAPT reorganized, institutes created*



ACAPT

ACAPT.ORG

# ACAPT STRUCTURE OVERVIEW



## **Institute for Academic Advancement**

- Encourage programmatic and clinical advancement
- Foster leadership excellence
- Advance diversity, equity, and inclusion
- Facilitate programmatic innovation

## **Institute for Teaching & Learning**

- Encourage Institutional educational excellence
- Facilitate excellence in clinical education
- Foster curricular innovation
- Advance educational technology
- Integrate professional formation

## **Institute for Community Engagement**

- Promote educational and clinical partnerships
- Engage in societal health and wellness
- Grow partnerships across healthcare disciplines

## **Institute for Scholarly Inquiry**

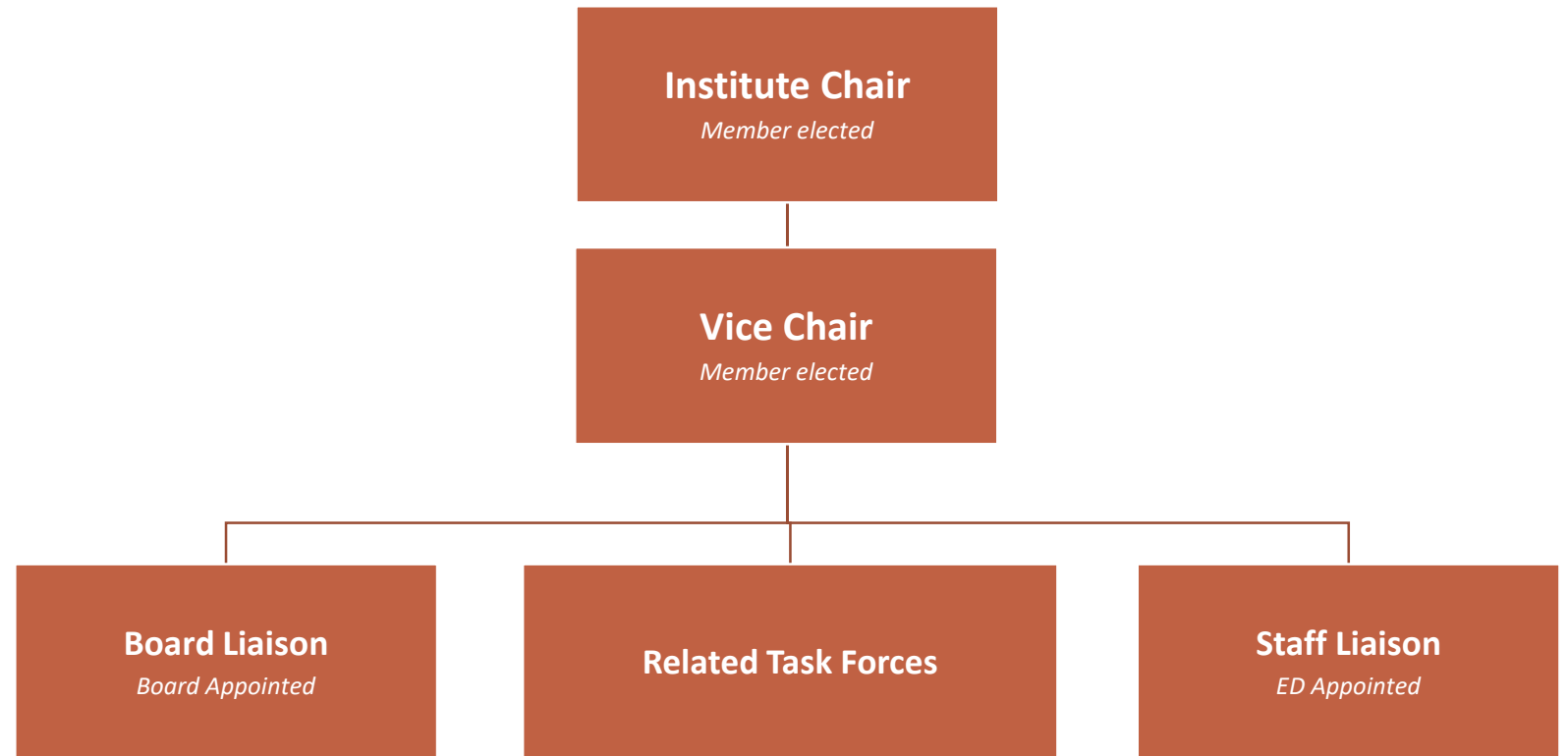
- Support Institutional scientific research advancement
- Promote implementation of discoveries into practice and education
- Develop best practices for research within academic and clinical institutions
- Advance educational preparation through research outcomes

**Commissions** shall include the National Equity Diversity & Inclusion Commission and the Clinical Education Commission (in development)

# INSTITUTE STRUCTURE

## EACH INSTITUTE:

- > Overseen by 1 member-elected chair & vice chair
- > Supported by 1 board liaison and a staff liaison
- > Comprised of task forces that are responsive to the strategic plan, member needs, and emerging issues or opportunities
- > Guided by the principles of continuous pursuit: **Innovation, Inquiry and Inclusion**





# TASK FORCE EXAMPLES

Teaching  
&  
Learning

Simulation Training

Competency-Based Education

Clinical Education Best Practices

Creating IPEC in your program

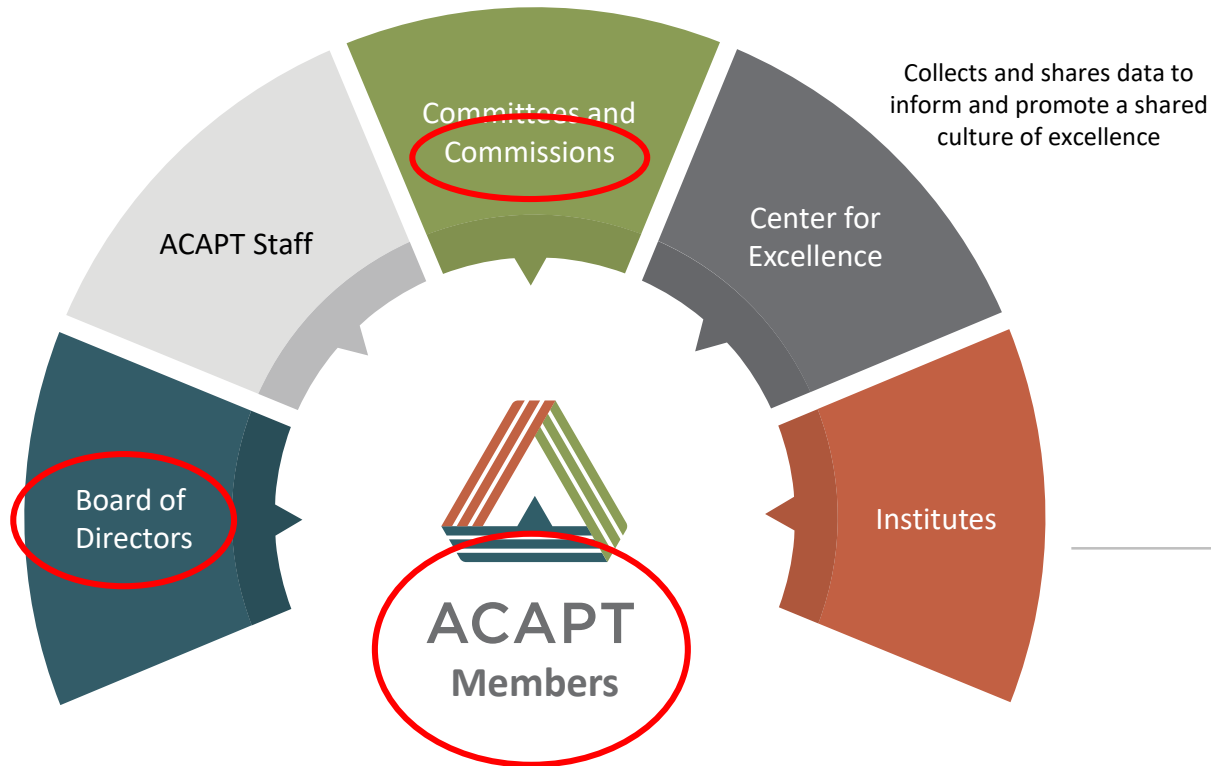


# REORGANIZED STRUCTURE

- > Merging the relevant activities from consortia into institutes provides a collaborative, integrative, flexible approach moving away from independent entities.
- > The new structure creates a clear unity of purpose and greater fiduciary management.
- > Each institute will support ACAPT's strategic initiatives providing the resources for members to achieve academic excellence.



# SO WHERE DOES CLIN ED FIT IN....



## **Institute for Academic Advancement**

Encourage programmatic and clinical advancement  
Foster leadership excellence  
Advance diversity, equity, and inclusion  
Facilitate programmatic innovation

## **Institute for Teaching & Learning**

Encourage Institutional educational excellence  
Facilitate excellence in clinical education  
Foster curricular innovation  
Advance educational technology  
Integrate professional formation

## **Institute for Community Engagement**

Promote educational and clinical partnerships  
Engage in societal health and wellness  
Grow partnerships across healthcare disciplines

## **Institute for Scholarly Inquiry**

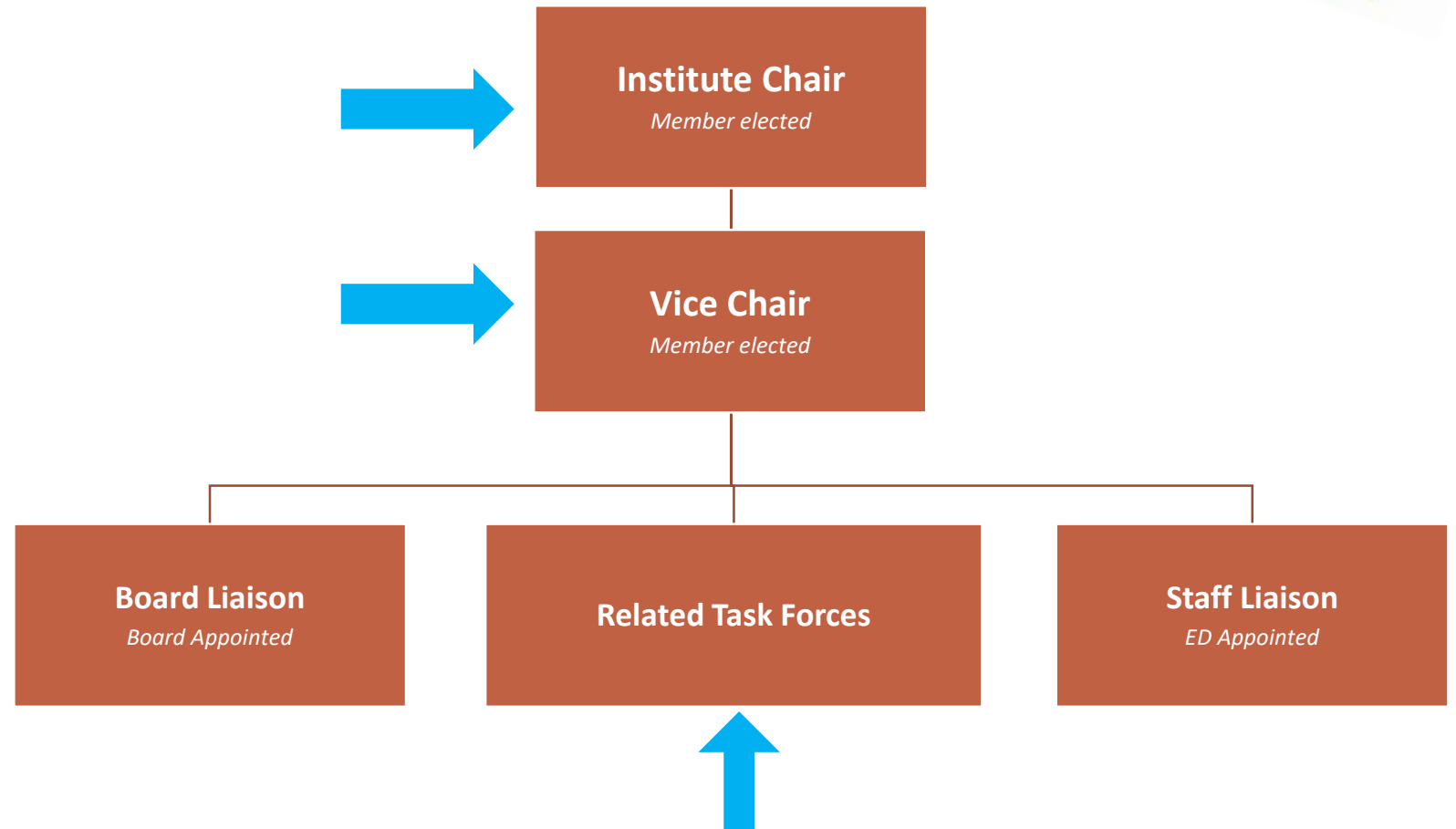
Support Institutional scientific research advancement  
Promote implementation of discoveries into practice and education  
Develop best practices for research within academic and clinical institutions  
Advance educational preparation through research outcomes

**Commissions** shall include the National Equity Diversity & Inclusion Commission and the Clinical Education Commission (in development)

# INSTITUTE STRUCTURE

## EACH INSTITUTE:

- > Overseen by 1 member-elected chair & vice chair
- > Supported by 1 board liaison and a staff liaison
- > Comprised of task forces that are responsive to the strategic plan, member needs, and emerging issues or opportunities
- > Guided by the principles of continuous pursuit: **Innovation, Inquiry and Inclusion**



# QUESTIONS???

# THANK YOU!!

## OUTGOING BOARD MEMBERS



October 18, 2020

Dear Marcia:

Thank you for serving on the nominating committee of the American Council of Academic Physical Therapists (ACAPT) NCCE for the 2017-2019 term. Your assistance as a member of the committee from 2017-2019 and then as its Chair for the 2019-2020 term is greatly appreciated.

The NCCE is committed to engaging academic and clinical educators through partnerships to advance excellence and innovation in physical therapist education. This is a very active organization that strives to foster partnerships, advance scholarly work for data driven decision-making, cultivate a national infrastructure to support information and expertise sharing and develop academic and clinical leaders. Your involvement with and leadership of the nominating committee has been integral to ensuring that we have high quality board members to advance our work and lead our clinical education community. Over the years that you served this committee, you have helped to successfully guide candidates for office through the election process and made a full ballot of candidates. You communicated election results and worked collaboratively with an appropriate staff to ensure a smooth transition for incoming board members. Your professional communication and attention to detail have maintained the integrity of the process and the reputation of the organization.

In addition to managing the election process, you served as a member of the NCCE Board during the year that you served as Nominating Committee Chair. You regularly attended our monthly meetings and contributed to our discussions. You were eager to assist with developing an orientation process for new board members and provided meaningful insight into enhancing the transition for future Nominating Committee Chairs. Your organizational skills and leadership as Chair allowed us to enhance our document storage processes this year, which should provide more space and efficiency for years to come.

It has truly been a pleasure to serve our professional organization alongside of you. Thank you for sharing your time, passion and expertise with the NCCE Board and our membership.

Sincerely,

  
Janice Hays, MEd, PT, CPT, MEd  
Chair, ACAPT National Consortium of Clinical Educators

[jchays@acapt.org](mailto:jchays@acapt.org)

# VICE CHAIR

**Matt Calendrillo, PT, DPT**  
**May 2021 – October 2022**  
**CDAL 2018-2021**



# SECRETARY

**Jamie Bayliss, PT, MPT, DHSc**  
**Two terms 2018 - 2022**



# NOMINATING COMMITTEE CHAIR

**Veronica Jackson, PT, DPT**  
**Chair, 2021 - 2022**  
**Member, 2019 - 2021**





# ACADEMIC DIRECTORS-AT-LARGE



**Lisa Black, PT, DPT**  
**2020 - 2022**



**Chris Cesario, PT, DPT, MBA**  
**2020 - 2022**

# INSTILLATION OF OFFICERS SECOND TERM

**Suzie Maciel, PT**  
**Sutter Health, Sacramento**  
**Clinical DAL**



**Tabitha Bonney Rozeboom, PT**  
**Sharp Healthcare**  
**Clinical DAL**

**Jamie Dehan, PT, PhD, DPT, MS**  
**University of St. Mary**  
**Nominating Committee Chair**



# INSTILLATION OF NEW OFFICERS

## VICE CHAIR

## SECRETARY



**Janette Scardillo, PT, DPT**  
**University of Scranton**



**Colette Pientok, PT, DPT**  
**Memorial Hermann's Sports**  
**Medicine and Rehab**  
**CDAL → Secretary!!**

# INSTILLATION OF NEW OFFICERS ACADEMIC DIRECTORS-AT-LARGE

**Janet Konecne, PT, DPT, PhD**  
**Western University of Health Sciences – CA**



**Tara Paradie, PT, MSPT, DHSc(c)**  
**University of New England**

# INSTILLATION OF NEW OFFICERS CLINICAL DIRECTOR-AT-LARGE



**Amanda Crouch, PT, DPT**  
**Rock Valley Physical Therapy**

# INSTALLATION OF NEW OFFICERS NOMINATING COMMITTEE

**Catherine Bilyeu, PT, DPT**  
**University of Colorado**





# ENJOY THE REST OF YOUR CONFERENCE

> Joint CESIG – NCCE presentation:

*From Zoom to the Clinic: Unique Student Challenges in Physical Therapy Clinical Education*

- Sunday 10/30/2022 8:00am-9:30am Room 102 C



## Thank you! National Consortium of Clinical Educators (NCCE) contact info:

- [ncce@acapt.org](mailto:ncce@acapt.org)
- <https://acapt.org/ncce>
- [facebook.com/acapt2](https://facebook.com/acapt2)
- [twitter.com/acapt2](https://twitter.com/acapt2)
- [www.linkedin.com/company/acapt](https://www.linkedin.com/company/acapt)